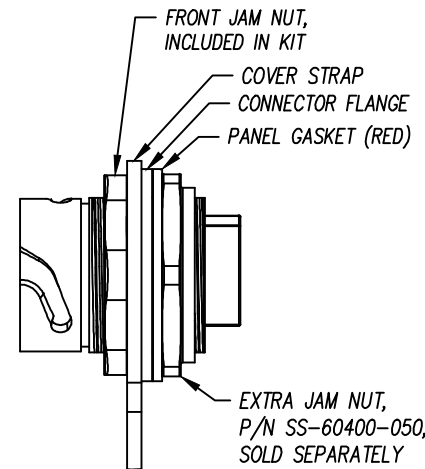


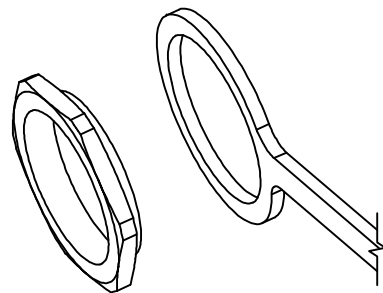
DATE	REV	ECN	APP'D. BY
-	A0	-	-
4-24-20	B0	11539	ADB
08-12-24	B1	12419	KAW
10-14-24	B2	12451	KAW

B

B

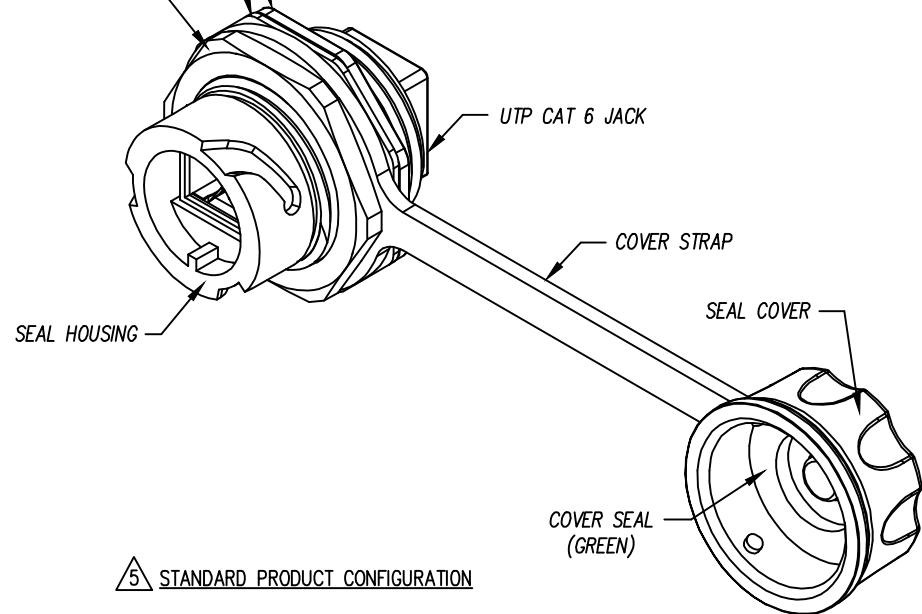


6 SUGGESTED PRODUCT CONFIGURATION FOR PANELS THICKER THAN .045 [1.15]

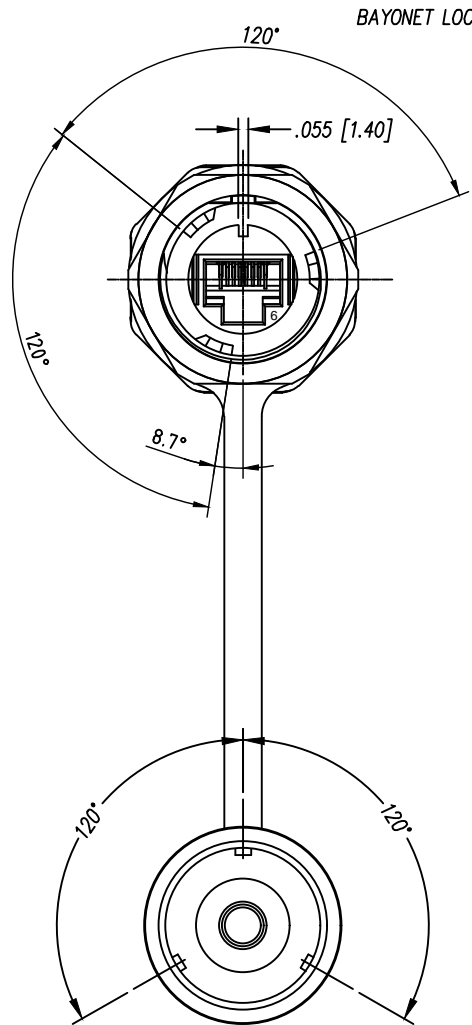


FRONT JAM NUT INSTALLATION ORIENTATION

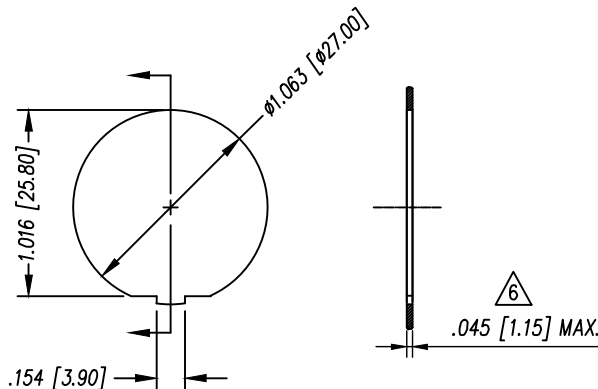
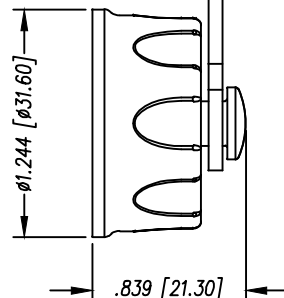
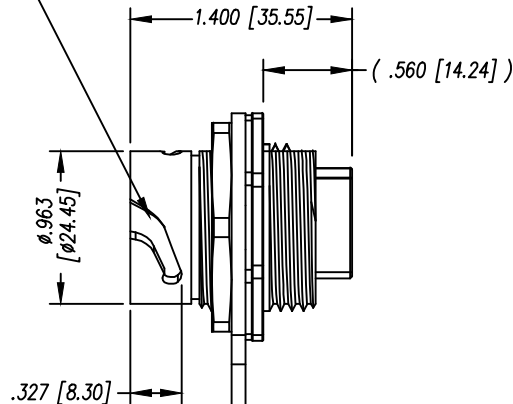
CONNECTOR FLANGE  
PANEL SEAL (RED)  
JAM NUT



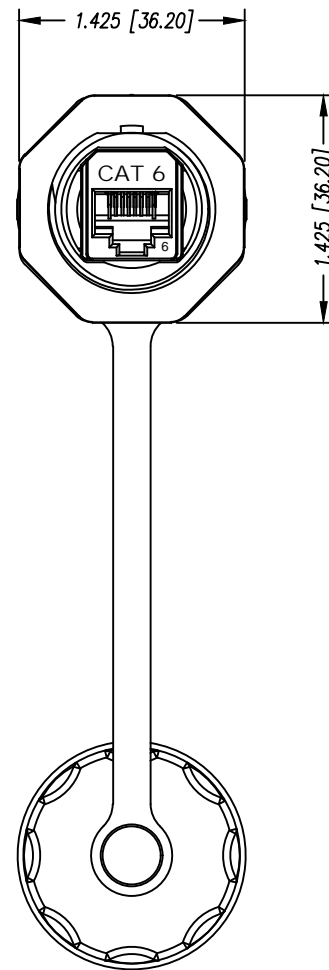
5 STANDARD PRODUCT CONFIGURATION



BAYONET LOCK



SUGGESTED PANEL OPENING



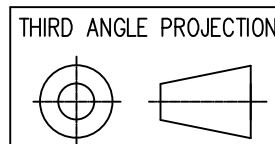
NOTES:

- CONNECTOR MATERIALS:  
HOUSING: THERMOPLASTIC UL94 V-0  
CONTACTS: COPPER ALLOY, TIN PLATED  
CONTACT PLATING: SELECTIVE GOLD OR EQUIVALENT IN THE CONTACT AREA  
SEE CHART FOR PART NUMBER
- JACK DIMENSIONS AND TOLERANCES COMPLY WITH TIA-1096 STANDARD.
- DESIGNED FOR CATEGORY 6 APPLICATIONS.
- INTERNATIONAL PROTECTION CODE MEETS IP67.
- RED PANEL GASKET SEALS ON REAR SIDE OF PANEL. COVER STRAP IS INSTALLED ON THE FRONT SIDE OF THE CONNECTOR SHELL. TIGHTEN NUT TO 26-44 IN-LB [3-5 N-m].
- SUGGESTED CONFIGURATION FOR PANELS THICKER THAN .045 [1.15]. MOVE PANEL GASKET TO OPPOSITE SIDE OF CONNECTOR FLANGE. PANEL FITS BETWEEN THE GASKET AND AN EXTRA JAM NUT, P/N SS-60400-050. INSTALL THE EXTRA NUT WITH ITS FLANGE FACING TO THE REAR ON THE BACK SIDE OF THE CONNECTOR SHELL. IF USING THE COVER STRAP, INSTALL IT ON THE FRONT SIDE OF THE CONNECTOR SHELL. TIGHTEN BOTH NUTS TO 26-44 IN-LB [3-5 N-m].
- ELECTRICAL PROPERTIES:  
INSULATION RESISTANCE: 500MΩ MIN. @ 100VDC  
DIELECTRIC WITHSTANDING VOLTAGE: 1000VDC OR VAC @ 60Hz FOR 1 MIN.

50 MICRO-INCHES [1.27um]	SS-60400-026
CONTACT PLATING IN MATING AREA	PART NUMBER

A

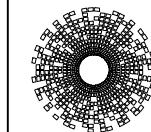
A



DO NOT SCALE DRAWING  
DRAWING IS SUBJECT TO  
CHANGE WITHOUT NOTICE

DIMENSIONS: INCHES [METRIC]  
UNLESS OTHERWISE SPECIFIED  
TOLERANCES ARE ±.005 [0.13]  
ANGLES ARE ± 1°

SHEET NO. 1 OF 1



**stewart**  
CONNECTOR  
a bel group

11118 Susquehanna Trail South  
Glen Rock, PA 17327-9199  
(717) 235-7512  
<http://www.stewartconnector.com>

TITLE: INDUSTRIAL UNSHIELDED COUPLER JACK IP67 (UTP) CAT 6

THIS DRAWING AND THE SUBJECT MATTER SHOWN THEREON ARE CONFIDENTIAL AND THE PROPRIETARY PROPERTY OF STEWART CONNECTOR AND SHALL NOT BE REPRODUCED, COPIED, OR USED IN ANY MANNER WITHOUT PRIOR WRITTEN CONSENT OF STEWART CONNECTOR. ONE OR MORE U.S. PATENTS MAY APPLY TO THIS PRODUCT. FOR DETAILS, PLEASE VISIT: [HTTP://BELFUSE.COM/STEWART/PATENTS/](http://BELFUSE.COM/STEWART/PATENTS/)

DRN BY: DHG	DATE 06-06-18
APPD BY: TRM	DATE 06-07-18
DWG NO. CT600216	REV. B2

