

4

3

2

1

| DATE       | REV | ECN   | APP'D BY |
|------------|-----|-------|----------|
| 11/30/2018 | A0  |       | GWL      |
| 2/22/2019  | A1  | 11348 | GWL      |
| 3/6/2019   | A2  | 11354 | GWL      |
| 9/4/2025   | A3  | 12593 | GWL      |

## NOTES:

## 1. CONNECTOR MATERIALS:

HOUSING: HIGH TEMPERATURE THERMOPLASTIC UL94 V-0 BLACK  
 OUTER SHIELD: ZINC DIECAST, TIN PLATED  
 USB SHIELD: COPPER ALLOY, PLATING: NICKEL OR TIN  
 REAR SHIELD: STAINLESS STEEL  
 CONTACT MATERIAL: COPPER ALLOY,  
 CONTACT PLATING: SELECTIVE GOLD 30u" IN CONTACT AREA, TIN ON SOLDER TAILS  
 PANEL GASKET: SILICONE RUBBER

SILICONE SEALING COMPOUND IN REAR OF JACK

## 2. FOR PRODUCT SPECIFICATION SEE PR044-01

## 3. DIMENSIONS AND TOLERANCES COMPLY WITH USB 2.0 STANDARD.

## 4. ENVIRONMENTAL PERFORMANCE PER IEC 60529 CODE IP67 FOR CONNECTOR AND PANEL INTERFACE. REFER TO INSTRUCTION SHEET MNS20001 FOR INSTALLATION GUIDELINES.

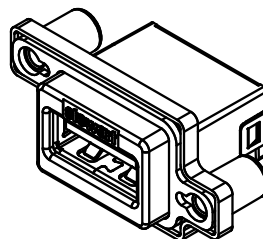
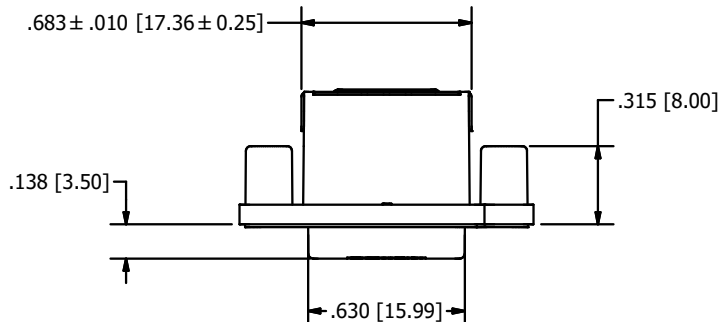
5. THE SUGGESTED PANEL OPENING IS INTENDED TO GIVE USER THE ABILITY TO HAVE REASONABLE JACK/PANEL CLEARANCES, YET MAINTAIN GROUNDING CAPABILITY. THESE VARIABLES CAN BE ADJUSTED IN EITHER DIRECTION BUT MAY CARRY SOME CONSEQUENCES IN THE FORM OF LOWER MATING FORCES OR TIGHTER ASSEMBLY TOLERANCES.

## 6. CURRENT RATING: 1.0 AMP AT 250V AC

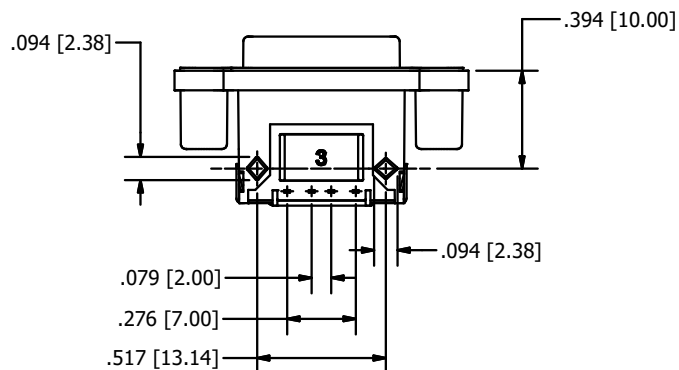
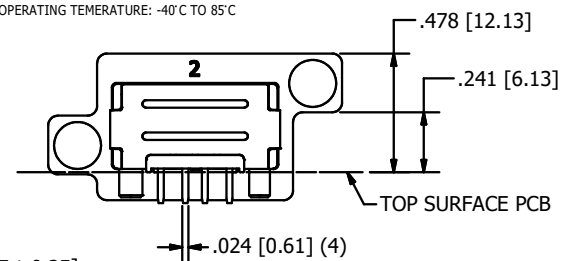
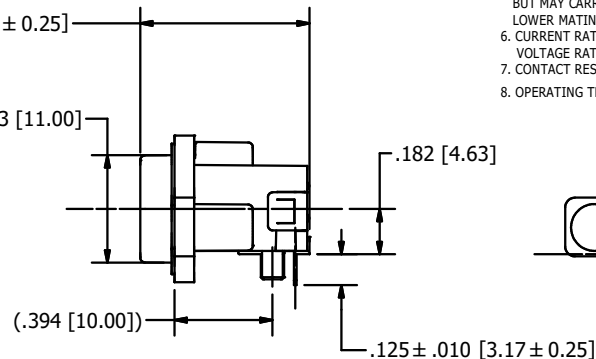
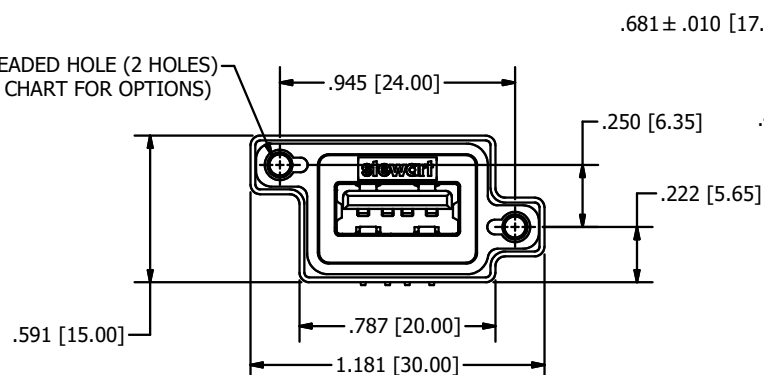
## 7. VOLTAGE RATING: 30V

## 8. CONTACT RESISTANCE 30 mil ohms MAX

## 9. OPERATING TEMPERATURE: -40°C TO 85°C

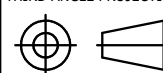


"A" THREADED HOLE (2 HOLES)  
 (SEE CHART FOR OPTIONS)



| PART NUMBER  | "A" THREADED HOLE |
|--------------|-------------------|
| SS-52200-001 | #4-40 UNC THREAD  |
| SS-52200-002 | M3 X 0.5 THREAD   |

## THIRD ANGLE PROJECTION



11118 Susquehanna Trail South  
 Glen Rock, PA 17327-9199  
 (717) 235-7512

<http://www.stewartconnector.com>

TITLE: RIGHT ANGLE USB, IP67 SEAL JACK CONNECTOR

DO NOT SCALE DRAWING

DRAWING IS SUBJECT TO CHANGE WITHOUT NOTICE

DIMENSIONS: INCHES [METRIC]

UNLESS OTHERWISE SPECIFIED  
 TOLERANCES ARE ±.005 [0.13]  
 ANGLES ARE ± 1°

SHEET NO. 1 OF 2

THIS DRAWING AND THE SUBJECT MATTER SHOWN THEREON ARE CONFIDENTIAL AND THE PROPRIETARY PROPERTY OF STEWART CONNECTOR AND SHALL NOT BE REPRODUCED, COPIED, OR USED IN ANY MANNER WITHOUT PRIOR WRITTEN CONSENT OF STEWART CONNECTOR. THE SUBJECT MATTER MAY BE PATENTED OR A PATENT MAY BE PENDING.

DRN BY: G. LUCAS

DATE: 1/19/2018

APPRO BY: D. Gutter

DATE: 12/3/2018

DWG NO: CT520007

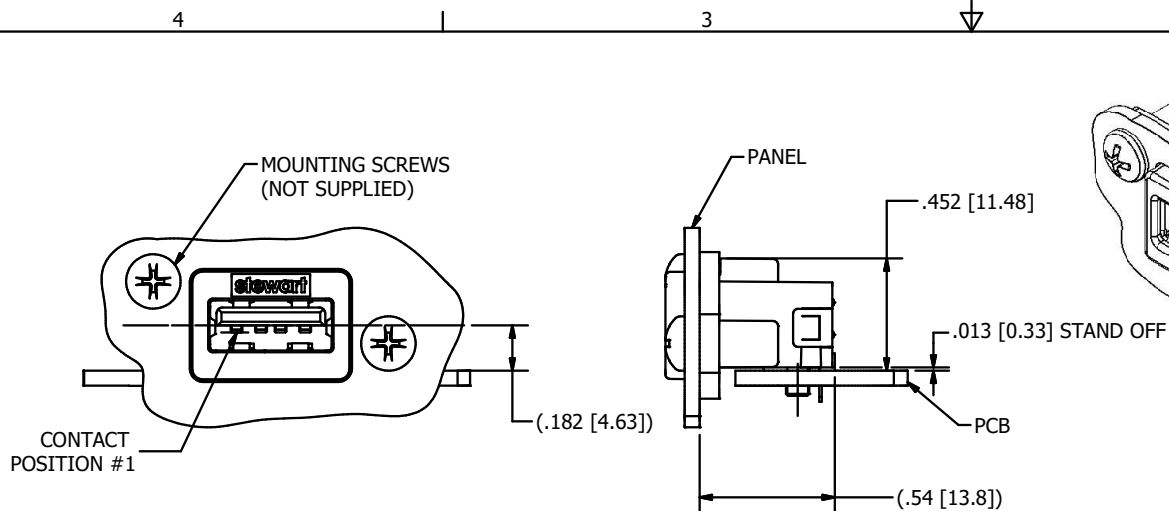
REV: A3

RoHS

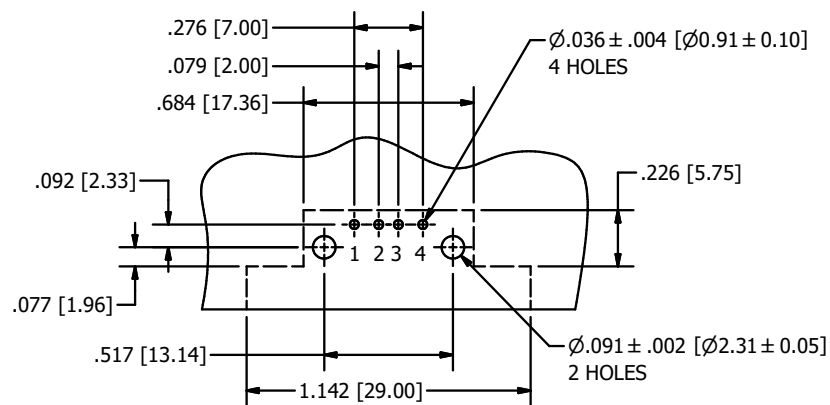
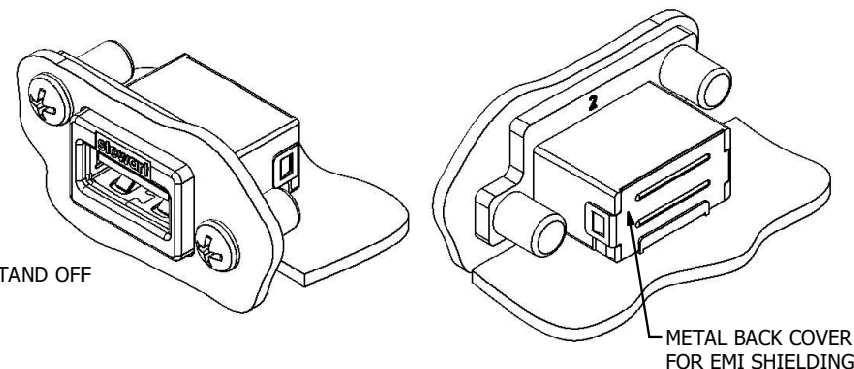
GEN CT

Inventor

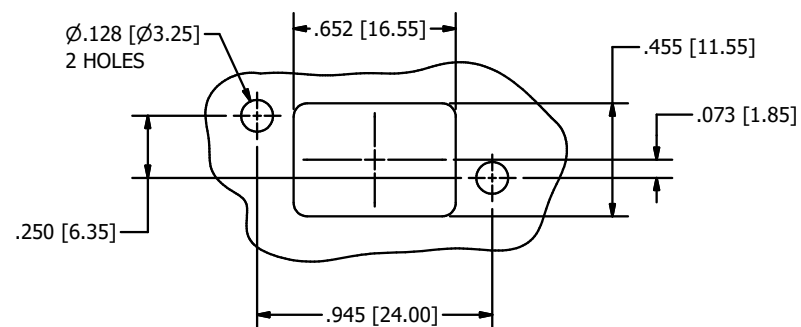
1



**RECOMMENDED PANEL/PCB LAYOUT**



**RECOMMENDED PCB LAYOUT  
COMPONENT SIDE OF BOARD**



**RECOMMENDED PANEL CUTOUT  
OUTSIDE VIEW OF PANEL**



|                                                                                                                                                   |                                                                                                                                                                                                                                                                                                           |                     |                    |                        |                    |                     |            |
|---------------------------------------------------------------------------------------------------------------------------------------------------|-----------------------------------------------------------------------------------------------------------------------------------------------------------------------------------------------------------------------------------------------------------------------------------------------------------|---------------------|--------------------|------------------------|--------------------|---------------------|------------|
| <p>THIRD ANGLE PROJECTION</p>                                                                                                                     | <p>11118 Susquehanna Trail South<br/>Glen Rock, PA 17327-9199<br/>(717) 235-7512<br/><a href="http://www.stewartconnector.com">http://www.stewartconnector.com</a></p>                                                                                                                                    |                     |                    |                        |                    |                     |            |
| <p>DO NOT SCALE DRAWING</p> <p>DRAWING IS SUBJECT TO<br/>CHANGE WITHOUT NOTICE</p>                                                                | <p>TITLE: RIGHT ANGLE USB, IP67 SEAL JACK CONNECTOR</p>                                                                                                                                                                                                                                                   |                     |                    |                        |                    |                     |            |
| <p>DIMENSIONS: INCHES [METRIC]</p>                                                                                                                | <p>THIS DRAWING AND THE SUBJECT MATTER SHOWN THEREON ARE CONFIDENTIAL AND THE PROPRIETARY PROPERTY OF STEWART CONNECTOR AND SHALL NOT BE REPRODUCED, COPIED, OR USED IN ANY MANNER WITHOUT PRIOR WRITTEN CONSENT OF STEWART CONNECTOR. THE SUBJECT MATTER MAY BE PATENTED OR A PATENT MAY BE PENDING.</p> |                     |                    |                        |                    |                     |            |
| <p>UNLESS OTHERWISE SPECIFIED<br/>TOLERANCES ARE <math>\pm .005</math> [0.13]<br/>ANGLES ARE <math>\pm 1^\circ</math></p> <p>SHEET NO. 2 OF 2</p> | <table border="1"> <tr> <td>DRN BY:<br/>G. LUCAS</td> <td>DATE:<br/>1/19/2018</td> </tr> <tr> <td>APPRO BY:<br/>D. Gutter</td> <td>DATE:<br/>12/3/2018</td> </tr> <tr> <td>DWG NO:<br/>CT520007</td> <td>REV:<br/>A3</td> </tr> </table>                                                                  | DRN BY:<br>G. LUCAS | DATE:<br>1/19/2018 | APPRO BY:<br>D. Gutter | DATE:<br>12/3/2018 | DWG NO:<br>CT520007 | REV:<br>A3 |
| DRN BY:<br>G. LUCAS                                                                                                                               | DATE:<br>1/19/2018                                                                                                                                                                                                                                                                                        |                     |                    |                        |                    |                     |            |
| APPRO BY:<br>D. Gutter                                                                                                                            | DATE:<br>12/3/2018                                                                                                                                                                                                                                                                                        |                     |                    |                        |                    |                     |            |
| DWG NO:<br>CT520007                                                                                                                               | REV:<br>A3                                                                                                                                                                                                                                                                                                |                     |                    |                        |                    |                     |            |

GEN CT

Inventor