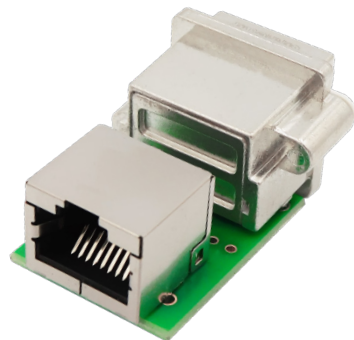
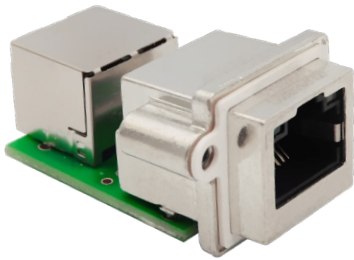


SealJack® PCB Coupler

Right Angle RJ45 to Right Angle SealJack® RJ45

Stewart's SealJack® RJ45 to RJ45 PCB coupler provides reliability and functionality when Ethernet begins to move outside the typical office environment. Stewart's SealJack® PCB coupler utilizes the Right Angle SealJack® RJ45 jack to provide a sealed solution when mounting the coupler to a box. This coupler design is robust, compact and able to achieve 2.5G transmission speeds.



Features & Benefits

- IP67 panel mount RJ45 to RJ45 coupler
- #4-40 threaded blind pockets for mounting
- Compact design helps to maximize box real-estate
- Shielded configuration
- LEDs available
- Supports POE
- RoHS compliant

Applications

- Industrial environments
- Connectivity for non-office environments
- Renewable energy industry
- Industrial environments
- Military communication
- Medical devices
- Test equipment

Ordering Information

Part Number	Shielded	LEDs	Description
SS-60400-028	Shielded	Yes	RJ45 to RJ45 coupler